



## The thermal water of Bad Wildbad

The historical spa town Bad Wildbad in the Black Forest region has multiple “Kureinrichtungen” where guests can enjoy thermal baths. The thermal water (with a temperature up to 41.6 °C) is classified as Heilwasser (Käβ and Käβ, 2008).

See also

[Thermal and CO<sub>2</sub>-rich water in Bad Liebenzell](#)

### Anomalies

The F-bearing, akrotothermal (i.e.  $T > 20\text{ °C}$ , but  $\text{TDS} < 1\text{g/l}$ ) water in the different wells (up to 594 m depth) of Bad Wildbad is characterized by a temperature of 34.5 to 41.6 °C (Käβ and Käβ, 2008). Assuming a shallow groundwater temperature of maximum 12 °C, and a geothermal gradient of 10 + 30 °C/km, this translates to a thermal anomaly of 10 to 30 °C. The occurrence of thermal water in Bad Wildbad is likely related to its infiltration in the higher areas west of the Enztals, after which it migrates up to 2500 – 3000 m depth and rises back to the surface in the fractured Forbach granite of the Nord-Schwarzwald granite complex (Käβ & Käβ, 2008).

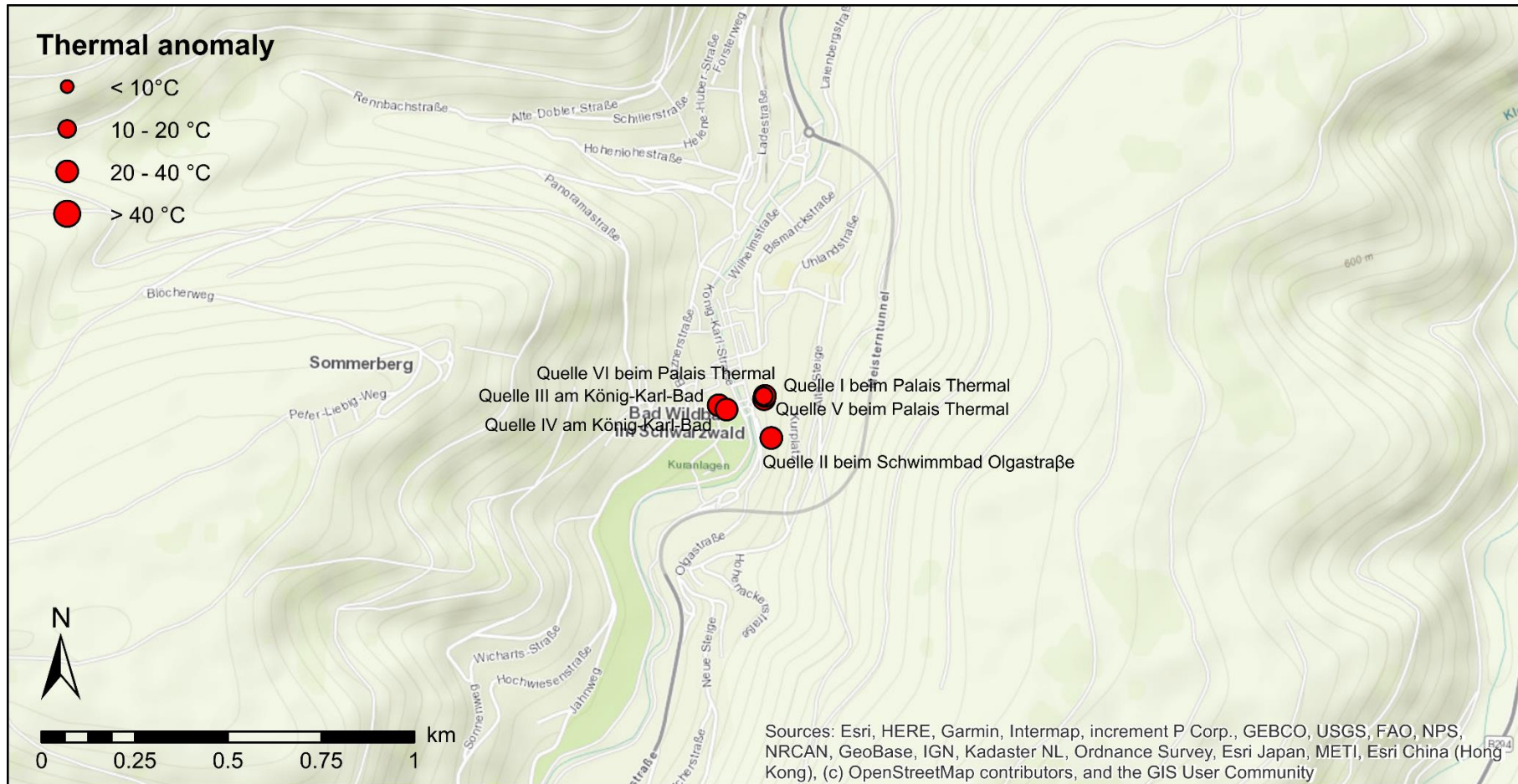


Figure 1: Thermal water in Bad Wildbad



## Data

ID	Coordinates	T	Depth	TDS°	Cl	Na	SO <sub>4</sub>	Free CO <sub>2</sub>	He	<sup>3</sup> He/ <sup>4</sup> He	Analysis year	References
		°C	m	g/l	mg/l	mg/l	mg/l	mg/l	ppmv			
Quelle I beim Palais Thermal	48°44'58" North 08°33'04" East	34.5	81.5	0.65	139			19.8			<2008	Käβ and Käβ (2008)
Quelle II beim Schwimmbad Olgastrasse	48°44'54" North 08°33'05" East	40.1		0.61	126	131	32.6	38.7			1999	Käβ and Käβ (2008)
		41.6	104	0.61	138			24.2			<2008	
		39.1		0.43	116	158	31.4				2013	Göb et al. (2013)
Quelle III am König-Karl-Bad	48°44'57" North 08°32'58" East	40.2	110.7	0.66	142			26.4			<2008	Käβ and Käβ (2008)
Quelle IV am König-Karl-Bad	48°44'57" North 08°32'59" East	40.1	200.7	0.66	140			20.9			<2008	Käβ and Käβ (2008)
Quelle V beim Palais Thermal	48°44'58" North 08°33'04" East	35.8	133.5	0.63	129.2			19.8			<2008	Käβ and Käβ (2008)
Quelle VI beim Palais Thermal	48°44'58" North 08°33'04" East	38.2	594								<2008	Käβ and Käβ (2008)

° TDS = Total Dissolved Solids

## References

Göb, S., Loges, A., Nolde, N., Bau, M., Jacob, D.E., Markl, G., 2013. Major and trace element compositions (including REE) of mineral, thermal, mine and surface waters in SW Germany and implications for water–rock interaction. *Applied Geochemistry* 33, 127-152.

Käβ, W., Käβ, H., 2008. *Deutsches Baderbuch*, 2 ed. Vereinigung für Bäder- und Klimakunde e.V., Stuttgart.

## Cite this source

Van Daele, J. & Ferket, H., 2021. The thermal water of Bad Wildbad [Fact sheet]. Flemish Planning Bureau for the Environment and Spatial Development (VPO).