



Warm springs in Ireland

Thermal springs are those natural groundwater springs where the mean annual temperature is appreciably warmer than average groundwater temperatures. Ireland sits in a low enthalpy setting so the thermal springs are classified as warm springs.

See also

[Karst caves](#), [Karst influent](#), [Karst springs](#).

Generalities

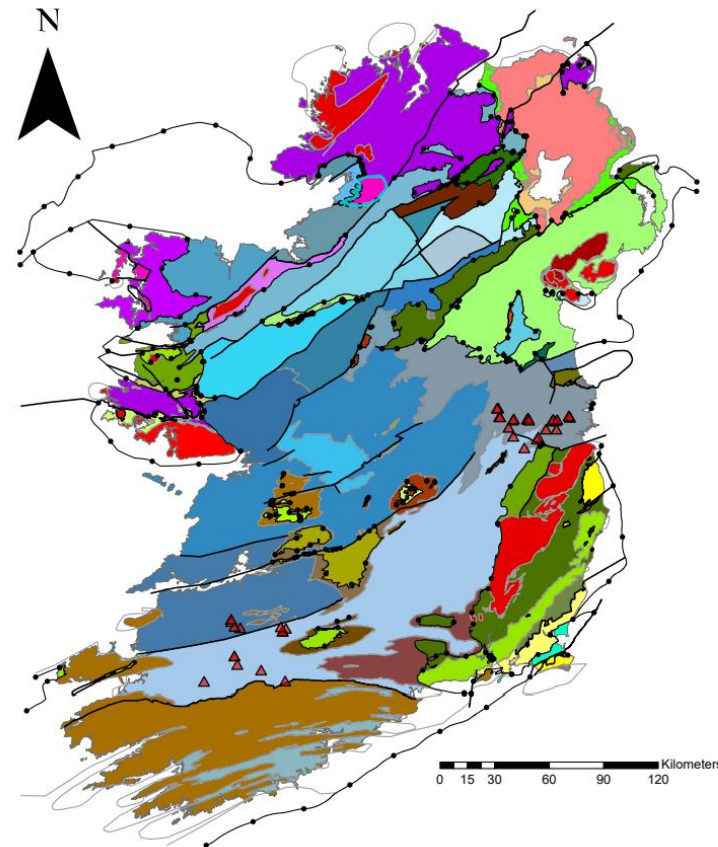
In Ireland geothermal energy potential is currently being explored to determine the suitability of Irish thermal springs as a geothermal energy resource.

Lower-temperature thermal groundwater from low enthalpy settings like the Irish one could be exploited for local and district scale heating.

Anomalies

The database of warm springs is incomplete with observations only recorded in two areas, East and South-West of Ireland.

The spatial distribution of the warm springs follows a NE – SW distribution pattern that is broadly coincident with the Iapetus Suture Zone.



1. Figure displaying the distribution of warm springs on the structural framework.



References

Blake, Sarah. 2016. A multi-disciplinary investigation of the provenance, pathways and geothermal potential of Irish thermal springs.

Cite this source

Rogers, R. & Mozo Lopez, B., 2021. Warm springs in Ireland [Fact sheet]. Geological Survey Ireland (GSI).