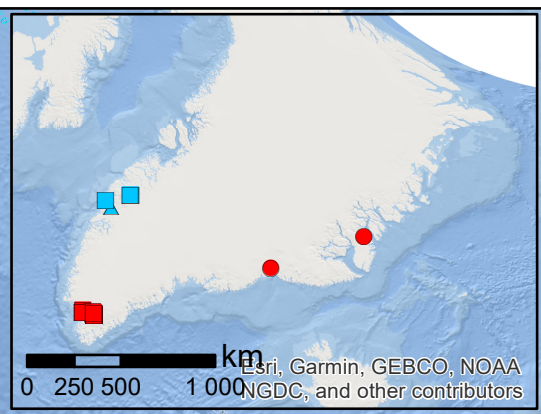


FRAME WP6
 Helge Reginiussen
 Erik Jonsson
 Susana María Timón Sánchez
 Alejandro Díez Montes
 Klemen Teran
 Rute Salgueiro
 Daniel Oliveira
 Carlos Inverno
 Augusto Filipe
 Igor Melnyk
 Martiya Sadeghi



Nb Mineralisations

- Rare metal granite-pegmatite-aplite
- Alkaline igneous rocks
- Carbonatite
- Hydrothermal/greisen/metasomatic
- Placer
- Unclassified
- Deposit
- Occurrence
- Prospect
- Mineralized zone
- Field

Many deposits and occurrences contain both Nb and Ta; typically, though, alkaline and carbonatitic ones are characteristically Nb-dominated, while fractionated rare metal granite-pegmatite-aplite ones (particularly if being of LCT character) are often Ta-enriched.

