

FAVOURABILITY MAP FOR PHOSPHATE MINERALIZATION IN EUROPE

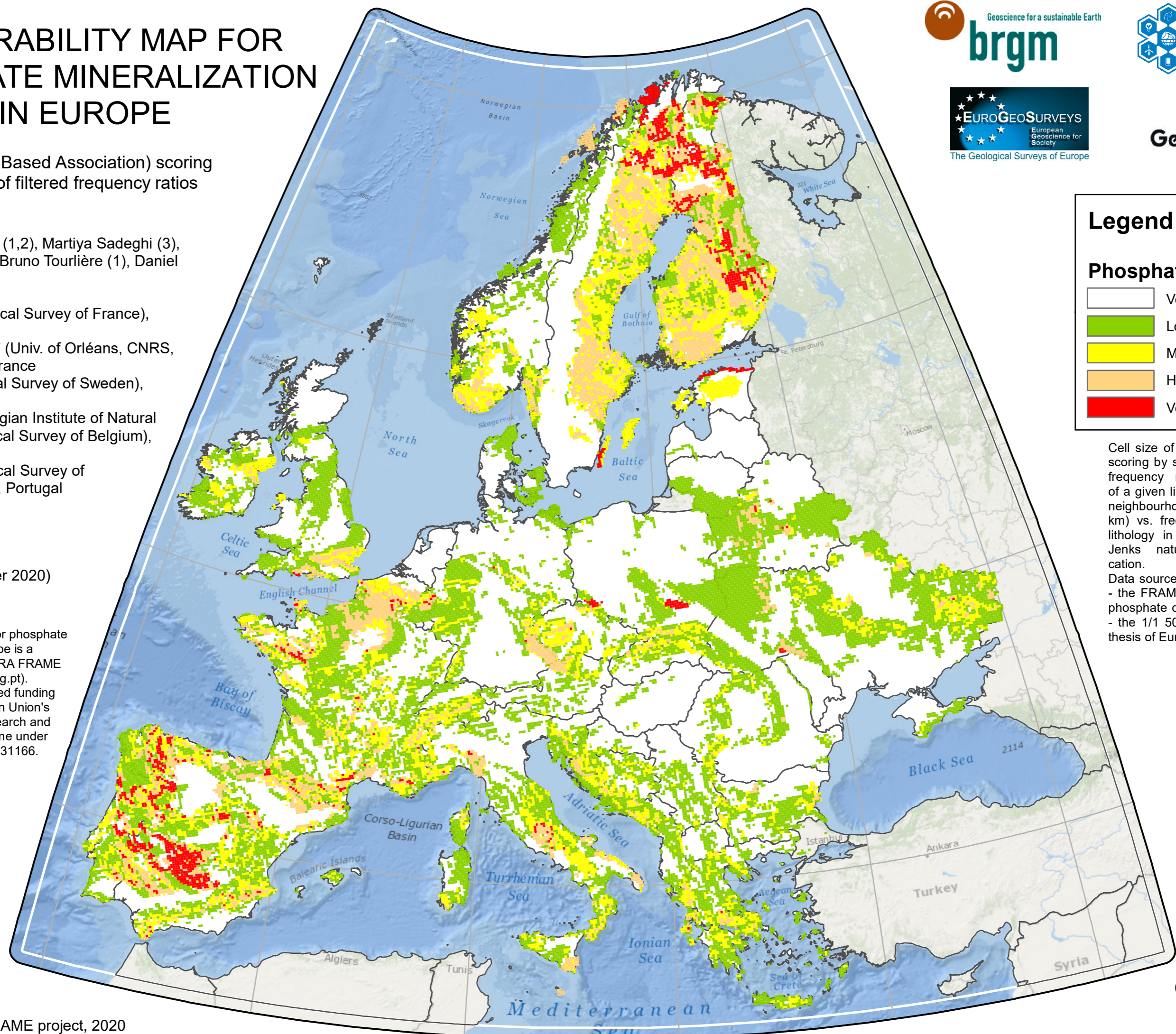
CBA (Cell Based Association) scoring by sum of filtered frequency ratios

Guillaume Bertrand (1,2), Martiya Sadeghi (3), Sophie Decree (4), Bruno Tourlière (1), Daniel de Oliveira (5)

- 1 – BRGM (Geological Survey of France), Orléans, France
- 2 – ISTO UMR7327 (Univ. of Orléans, CNRS, BRGM), Orléans, France
- 3 – SGU (Geological Survey of Sweden), Uppsala, Sweden
- 4 – GSB (Royal Belgian Institute of Natural Sciences - Geological Survey of Belgium), Brussels, Belgium
- 5 – LNEG (Geological Survey of Portugal), Alfragide, Portugal

Version 1.0 (October 2020)

This favourability map for phosphate mineralization in Europe is a result from the GeoERA FRAME project (www.frame.lneg.pt). GeoERA has received funding from the European Union's Horizon 2020 research and innovation programme under grant agreement No. 731166.



Legend

Phosphate favourability

| | |
|--|-----------|
| | Very low |
| | Low |
| | Medium |
| | High |
| | Very high |

Cell size of 10 km x 10 km. CBA scoring by sum of filtered (i.e. >1) frequency ratios, i.e. frequency of a given lithology in all standarts neighbourhood (buffers of 100 sq km) vs. frequency of the same lithology in all cells of the grid. Jenks natural breaks classification.

Data sources are:

- the FRAME project database on phosphate deposits;
- the 1/1 500 000 geological synthesis of Europe (Billa et al., 2008).

