

# FAVOURABILITY MAP FOR GRAPHITE MINERALIZATION IN EUROPE

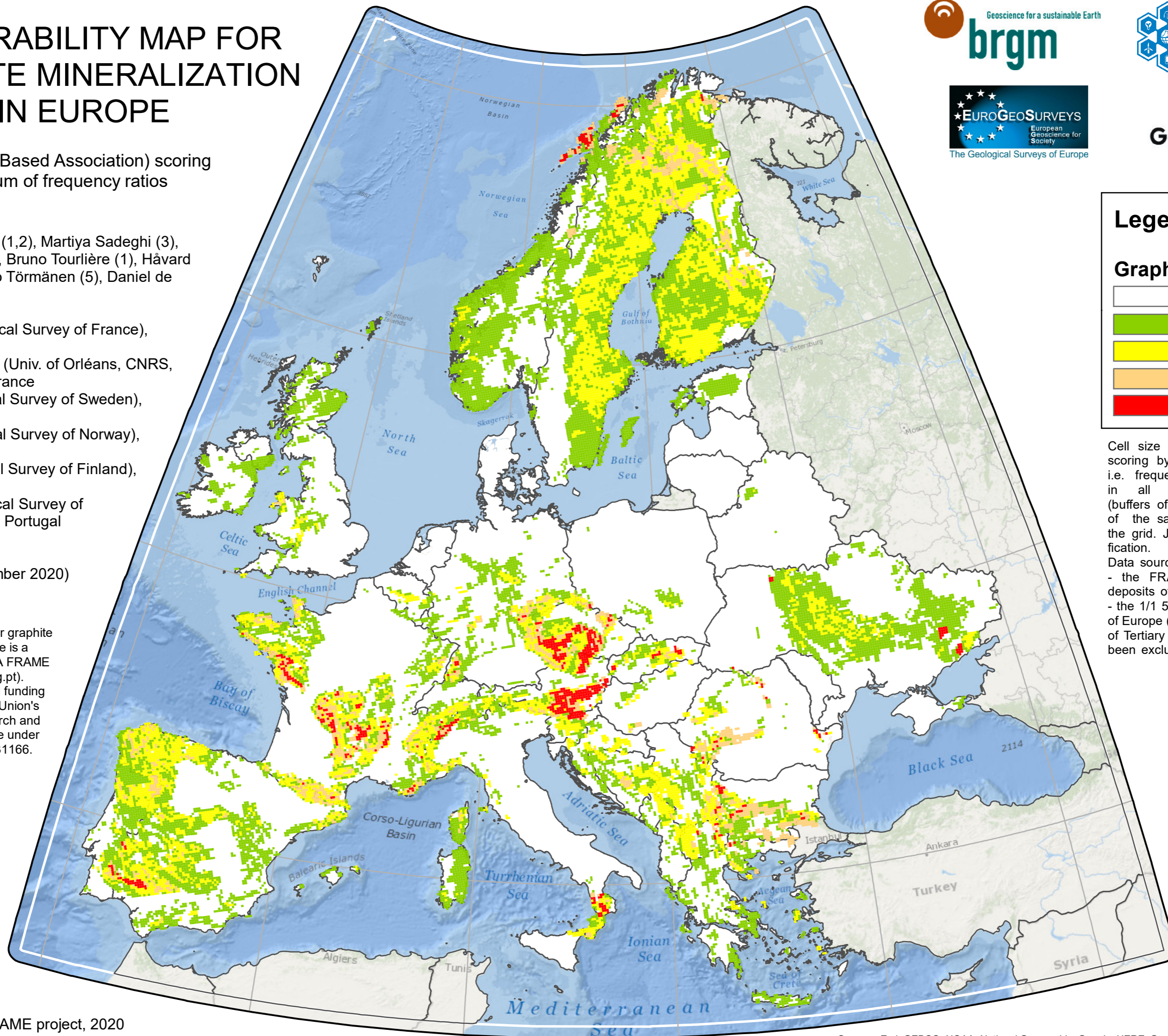
CBA (Cell Based Association) scoring by sum of frequency ratios

Guillaume Bertrand (1,2), Martiya Sadeghi (3), Eric Gloaguen (1,2), Bruno Tourlière (1), Håvard Gautneb (4), Tuomo Törmänen (5), Daniel de Oliveira (6)

- 1 – BRGM (Geological Survey of France), Orléans, France
- 2 – ISTO UMR7327 (Univ. of Orléans, CNRS, BRGM), Orléans, France
- 3 – SGU (Geological Survey of Sweden), Uppsala, Sweden
- 4 – NGU (Geological Survey of Norway), Trondheim, Norway
- 5 – GTK (Geological Survey of Finland), Rovaniemi, Finland
- 6 – LNEG (Geological Survey of Portugal), Alfragide, Portugal

Version 1.2 (September 2020)

This favourability map for graphite mineralization in Europe is a result from the GeoERA FRAME project ([www.frame.lneg.pt](http://www.frame.lneg.pt)). GeoERA has received funding from the European Union's Horizon 2020 research and innovation programme under grant agreement No. 731166.



### Legend

#### Graphite favourability

	Very low
	Low
	Medium
	High
	Very high

Cell size of 10 km x 10 km. CBA scoring by sum of frequency ratios, i.e. frequency of a given lithology in all standards neighbourhood (buffers of 100 sq km) vs. frequency of the same lithology in all cells of the grid. Jenks natural breaks classification.

Data sources are:

- the FRAME project database on deposits of energy critical elements;
- the 1/1 500 000 geological synthesis of Europe (Billa et al., 2008); lithologies of Tertiary and Quaternary ages have been excluded.

