



Lasberg

Lasberger Granit

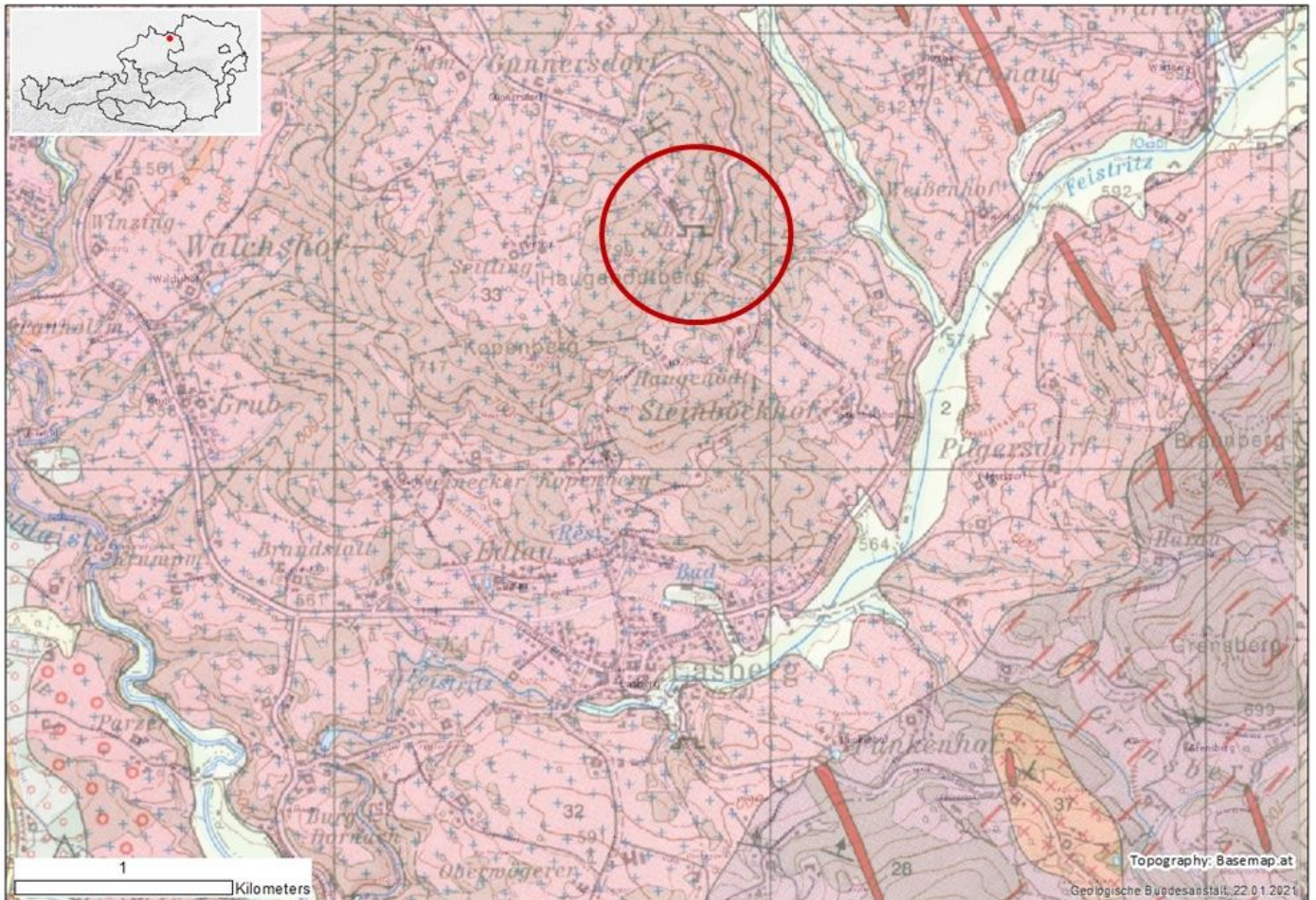


6 cm

Short description: fine-grained, very homogeneous, light-coloured granodiorite with feldspar inclusions of up to 1 cm

Commodity (vocabulary)	Lithology (vocabulary)	Typical colour (code list)	Place of origin			
			Country	County / District / Province	Municipality / Community	Place/town / Village
Commercial Granite	Granodiorite	Grey	Austria	Freistadt / Oberösterreich (Upper Austria)	Lasberg	Lasberg

Geological setting



Geology: Lasberg granite is the trade name for the rock from the quarry on the Haugenodtberg north of Lasberg. It is actually the fine-grained variety of the Freistädter Granodiorite (pink signature with blue crosses on the map), a late orogenic intrusive body within the South Bohemian Batholith in the Mühlviertel (Upper Austria).

Production: The quarrying area is limited to the quarry on the Haugenodtberg (red marking).

Geological age: 302 Ma, Late Variscan to Post Variscan

Geological unit: Freistädter Granodiorit; (tectonic unit): Südböhmischer Batholith / Southern Bohemian Batholith (URI: <http://resource.geolba.ac.at/tectonicunit/106>)

Application, use and heritage

Description: The stone is mainly used for paving stones, ashlar, kerbstones, façade slabs, archways, step stones, wall stones, monuments and fountains. Examples of use are also cladding of motorway bridges or cladding stones for railway tunnels.

Petrography

Description:

Source of information:

Mineral composition

If no accurate number, use MM=main minerals, SM = Subordinate minerals, AM=accessory minerals

Mineral 1 (%)	Mineral 2 (%)	Mineral 3 (%)	Mineral 4 (%)	Mineral 5 (%)	Mineral 6 (%)	Mineral 7 (%)
Mineral 8 (%)	Mineral n (%)					

Source of information:

Physical properties

Apparent density (EN 1936) kg/m ³	Open porosity (EN 1936) % vol	Water absorption at atmospheric pressure (EN 13755) % wt	Uniaxial Compressive strength (EN 1926) MPa	Flexural strength under concentrated load (EN 12372) MPa

Real density (EN 1936) kg/m ³	Total porosity (EN 1936) % vol	Water absorption coefficient by capillary (EN 1925) (g/m ² x s ^{0,5})	Flexural strength under constant moment (EN 13161) MPa

Frost resistance (EN 12371)				
Technological Test (Test A)				Identification Test (Test B): Number of cycles completed prior to stone failure
Flexural strength (EN 12372) after freeze-thaw cycling, MPa	Number of cycles	Uniaxial compressive strength (EN 1926) after freeze-thaw cycling, MPa	Number of cycles	

Resistance to ageing by thermal shock (EN 14066)			
Change in dynamic modulus of elasticity (increase: +; decrease: -) %	Change in open porosity (increase: +; decrease: -) %	Change in ultrasound pulse velocity (increase: +; decrease: -) %	Change in flexural strength under conc. load (increase: +; decrease: -) %

Abrasion resistance (EN 14157)			Resistance to salt crystallisation (EN 12370)	Breaking load at dowel hole (EN 13364)	
Method A - Wide Wheel Abrasion Test, mm	Method B - Böhme Abrasion Test, cm ³ / 50cm ²	Method C - Amsler Abrasion Test, mm	Change in mass (increase: +; decrease: -), %	Breaking load, N	Thickness of the test specimens, mm

Slip resistance by means of the pendulum tester (EN 14231 / CEN/TS 16165)			Rupture energy (EN 14158), Joule	Thermal Conductivity (EN 1745), W/m·K
Tested surface finish	Slip Resistance Value — SRV			
		Dry test condition	Wet test condition	

Source of information:

Chemical properties

Main elements

SiO ₂ (%)	Al ₂ O ₃ (%)	Fe ₂ O ₃ (%)	TiO ₂ (%)	MgO (%)	CaO (%)	Na ₂ O (%)	K ₂ O (%)	MnO (%)	P ₂ O ₅ (%)	SO ₃ (%)	LOI (%)

Trace elements

V (ppm)	Cr (ppm)	Mn (ppm)	Co (ppm)	Ni (ppm)	Cu (ppm)	Zn (ppm)	As (ppm)
Sr (ppm)	Cd (ppm)	Ba (ppm)	Pb (ppm)	Be (ppm)	Rb (ppm)	Bi (ppm)	U (ppm)
Sc (ppm)	Y (ppm)	Th (ppm)	Sb (ppm)	Ta (ppm)	Nb (ppm)	Zr (ppm)	Sn (ppm)
Ag (ppm)	B (ppm)	Mo (ppm)	W (ppm)	Ga (ppm)	Ge (ppm)	Se (ppm)	Cs (ppm)
Tl (ppm)							

REE

La (ppm)	Ce (ppm)	Pr (ppm)	Nd (ppm)	Sm (ppm)	Eu (ppm)	Gd (ppm)	Tb (ppm)
Dy (ppm)	Ho (ppm)	Er (ppm)	Tm (ppm)	Yb (ppm)	Lu (ppm)		

Methods applied and source of information:

Sources of more information


Type of information	Name of provider	URL
This data sheet	Geological Survey of Austria (GBA)	https://www.geologie.ac.at
Non-commercial directory		
Commercial directory		
Scientific publication		
Other publication		

Anthes, G., Heinrich, M., Lipiarski, P., Massimo, D., Kollars, B. & Rabeder, J. (2006): Grundlagenerhebung zu Vorkommen von Granitgesteinen in Österreich: Voruntersuchungen der nutzbaren Festgesteinsarten unter schwerpunktmäßiger Betrachtung der qualitativen Eigenschaften für den Verkehrsflächen- & Wasserbau als Basis für den Österreichischen Rohstoffplan.- Studie zu Projekt Ü-LG-050, 64 S., 2 Anl., 3 Blg., Stobl/Wien.

Picture of stone surfaces: Source: Werbegemeinschaft der Steinmetzmeister im Rahmen der österreichischen Bundesinnung unter Mitarbeit der Landesinnungen Wien, Niederösterreich, Oberösterreich und Steiermark (Ed., 1991): Naturstein.- Natursteinkatalog, 96 Bl., Wien.

Geological map: Brüggemann, H. & Finger, F. (2002): Geologische Karte der Republik Österreich 1:50.000, Blatt 33 Steyregg.- 1 Blatt, Geologische Bundesanstalt, Wien.

Topographic map: Basemap.at (<https://basemap.at>)

Compiled by:	Geological Survey of Austria (GBA) https://www.geologie.ac.at	 Geologische Bundesanstalt
---------------------	---	---